

FOR IMMEDIATE RELEASE

Memorializing the Surviving Architectural Heritage of Pacific Palisades in California



View from Las Casas, Pacific Palisades, CA. March 28, 2025.
© Evan Curtis Charles Hall, House Museum

Los Angeles, CA – **House Museum** advances **Project Chimney**, an initiative to catalogue, relocate, and memorialize a selection of historically significant chimneys in the Pacific Palisades burn zone. Designed by master architects **Frank Lloyd Wright Jr.**, **Paul R. Williams**, and **Richard Neutra**, surviving chimneys capture a glimpse of the **architectural DNA of Los Angeles**. The initiative is supported by the **Pacific Palisades Preservation Coalition** and **Los Angeles Conservancy**.

Over **55 historically significant chimneys** have been identified, which date back to the Palisades' founding in 1922 and range in styles from **Spanish Colonial Revival** to **Mid-Century Modern** to **Coastal New England**. According to the **State of California - Office of Historic Preservation** standard, House Museum has assembled a growing **Artifact Catalogue** that includes chimneys belonging to instrumental Palisadians such as **Reverend Dr. Charles Scott**, leader of the Methodist Episcopal, who once lived on Via De La Paz and living legend, actor **Anthony Hopkins**.

House Museum is working with community members to salvage and preserve select chimneys, leading to the creation of a permanent installation—**The Palisades Fire Memorial**. The initiative references a long history of acclaimed public works including **Stonehenge** in Wiltshire, England, the **9/11 Memorial** at Ground Zero, New York City, and **Chris Burden's** Urban Light, installed locally at the **Los Angeles County Museum of Art** (LACMA). The proposed memorial will consist of free-standing fireplaces and chimneys, and be located on public land in the Pacific Palisades. Like elders in the community, the monolithic structures will gather people together and tell the tales of bygone residences. They will stand for generations, as architectural guides that point towards the future.

According to House Museum director, **Evan Curtis Charles Hall**, the preservation-centered memorial is “crucial for resisting cultural erasure.” **Phase 2 demolition** is rapidly advancing, which places urgency on Project Chimney. According to **LTC Nathaniel Weander** of the **Army Corps of Engineers**, 35 properties are cleared per day, with a goal of 1,050 being cleared per month. Residents are encouraged to submit candidate chimneys at www.house.museum and share the initiative with neighbors, while on-the-ground documentation and structural assessments continue. Elected officials have been petitioned to designate public land for the memorial. Through collaboration, House Museum is assembling a new heritage symbol for the Palisades that ignites both remembrance and hope.

About House Museum

House Museum is a 501(c)(3) nonprofit organization, whose mission is to preserve historically significant landmarks through the integration of site-specific artworks and community engagement. House Museum reimagines the function of underserved properties, in order to transform them into culturally rich and productive places. Each installation—interior, virtual, or otherwise—becomes an access point that connects the public to a constellation of citywide programs and exhibits. House Museum responds to challenges at the intersection of art, architecture, and historic preservation.

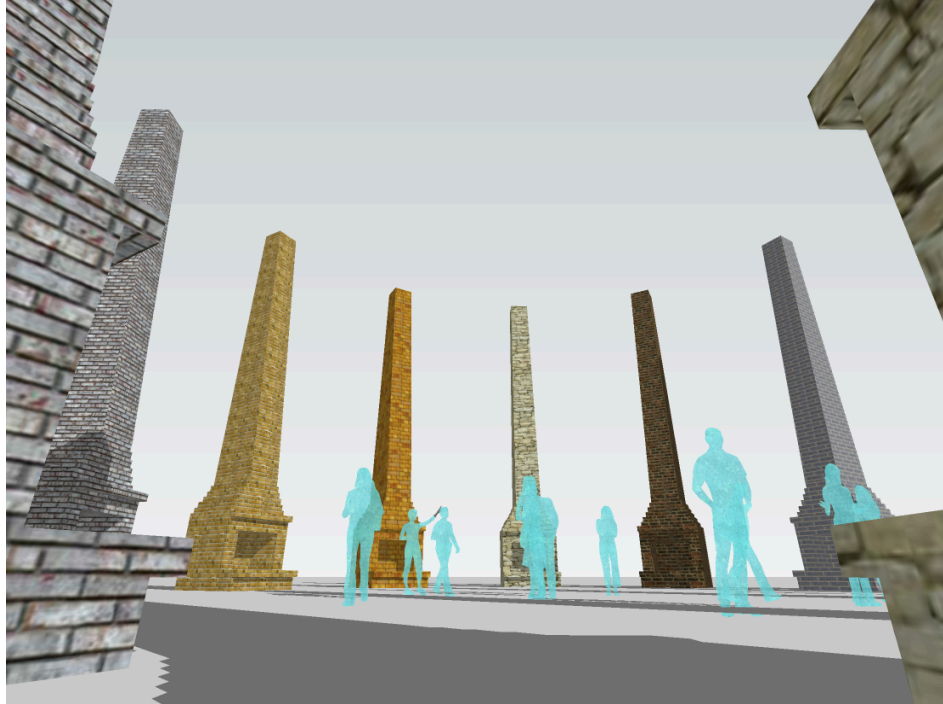
All donations are tax-deductible and contribute to raising awareness of historic landmarks and support their revitalization and programming. To learn more, visit www.house.museum or contact info@house.museum.

Contact

Email: info@house.museum

Website: www.house.museum

Instagram: [@house_museum](https://www.instagram.com/house_museum)



Palisades Fire Memorial, Concept Rendering
© Milton Lau, AIA, House Museum



Mid-Century Modern Chimney with Two Asymmetrical Fireplaces, 1952, El Medio Bluffs.
Image courtesy of House Museum



Richard Neutra, Kesler House, 1954.
Shulman Photo Archive Getty Research Institute

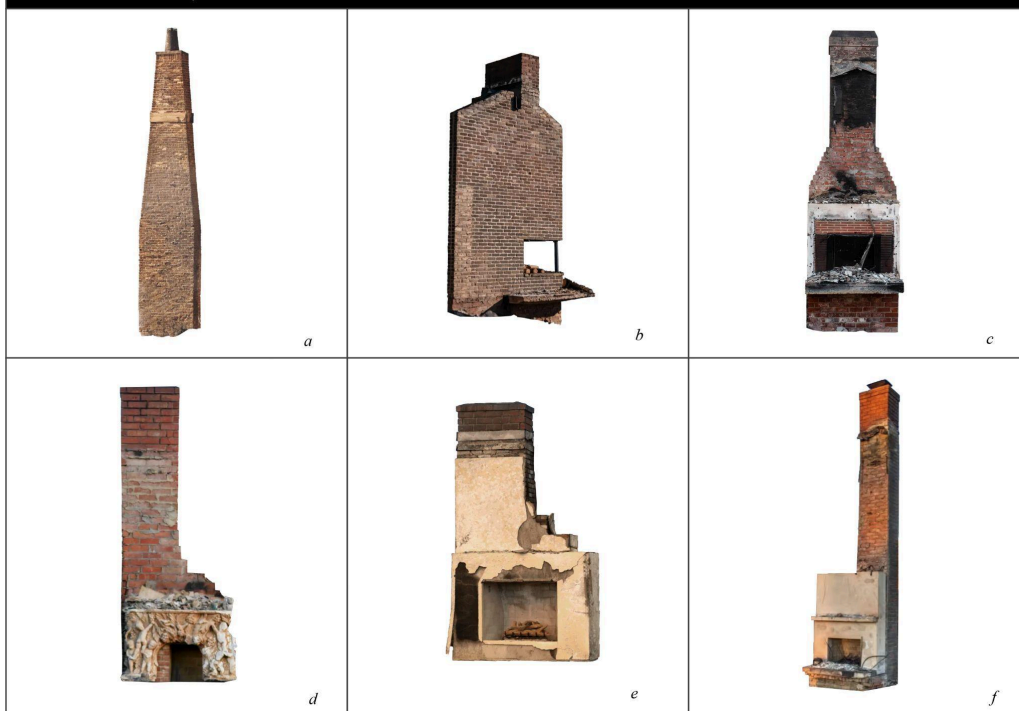


Richard Neutra, Kesler House, 2025.
© Evan Curtis Charles Hall, House Museum

HOUSE MUSEUM: Palisades Fire Memorial [Artifact Catalogue]

Year Range: c. 1920–2020

Location: Pacific Palisades, California



Palisades Fire Memorial [Artifact Catalogue], 2025.

Image courtesy of House Museum

###