



Palisades Rebuild Support Yard

December 16, 2025



The background image shows a construction site. On the left, a yellow CAT 903C2 skid steer loader is visible, with a worker in a high-visibility vest operating it. To the right, a white flatbed truck is loaded with wooden pallets. The scene is set against a backdrop of a brick building and wooden framing.

Agenda

☐ Business Description

☐ Site Plan

☐ Operating Hours

☐ Materials Variety

Who We Are

ACE Building Materials is a **family-owned business** dedicated to supporting local supply and rebuilding efforts.

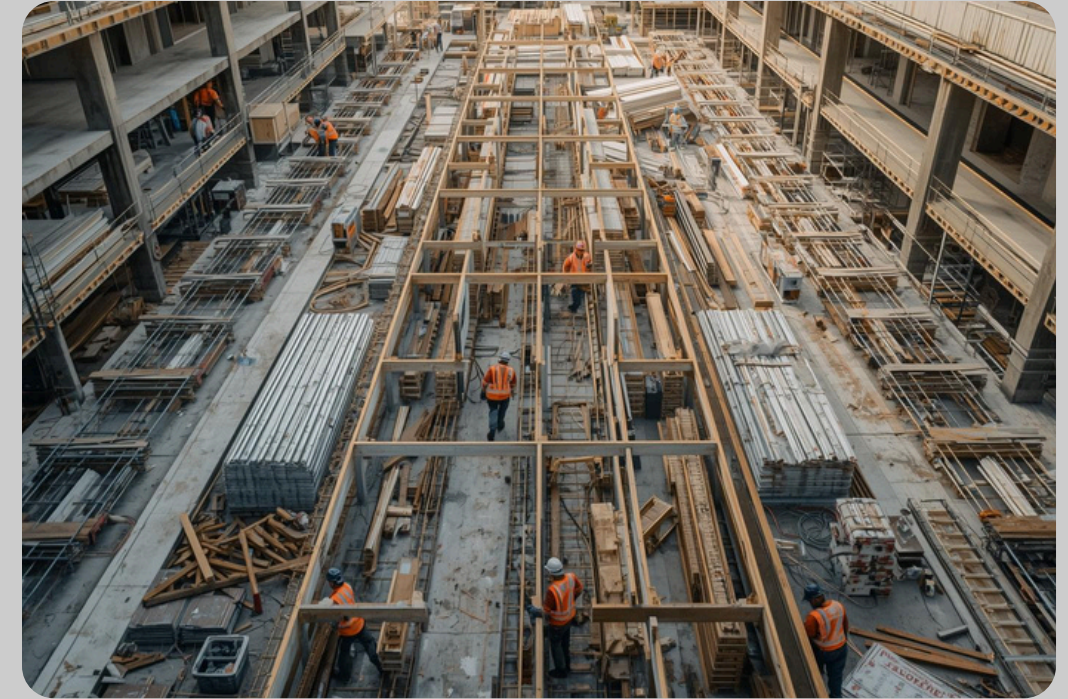


Why This Location

- **Rebuild Faster** — materials closer to job sites.
- **Reduce Traffic** — fewer trips + shorter routes.
- **Fewer Heavy Trucks** — consolidated pickups & scheduled deliveries
- **Efficient Flow** — quick in/out, organized staging.
- **Operationally Ready** — inventory + logistics to support scale.
- **Compliant by Design** — clear rules, trained staff, documented process.
- **Community Care** — respectful operations + ongoing communication.

Rebuild Speed

Convenient access ensures **rapid response times** for local rebuild projects.



Local Delivery

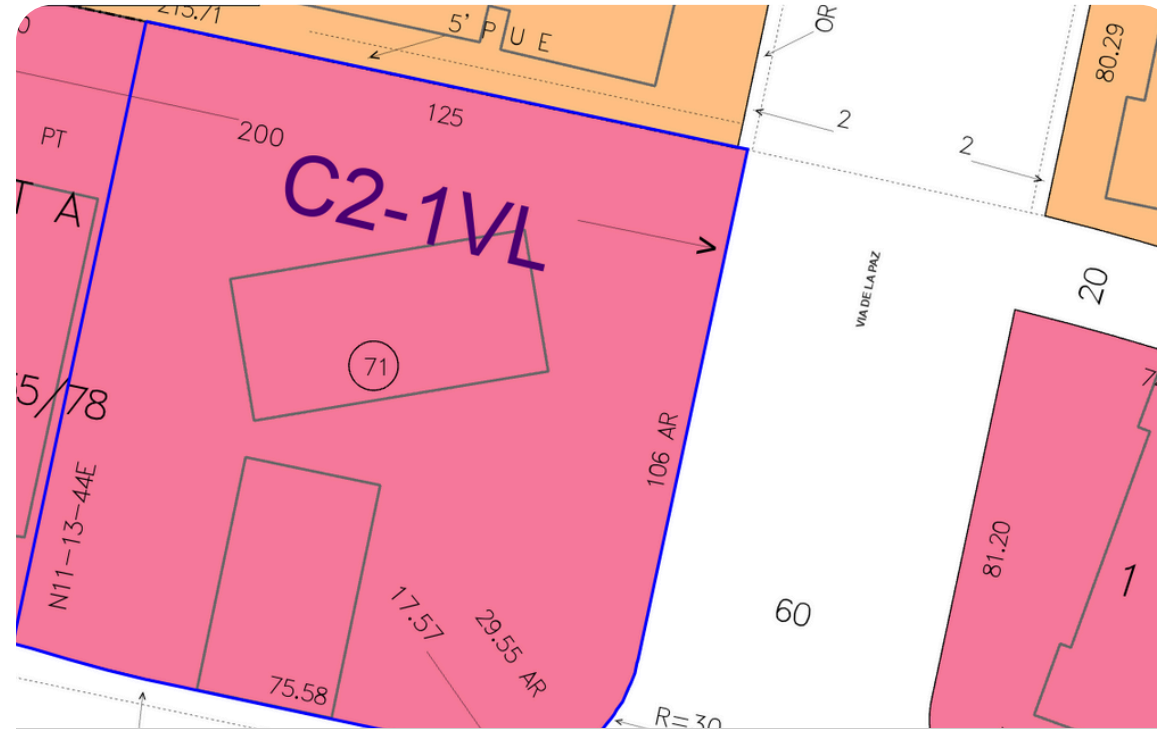
Direct delivery services minimize **transport time** to construction sites.





Seamless Ordering Process for Customers

Customers can contact us to confirm availability and place orders with direct, **guided support** from our team.



Safe and Smooth Exit Procedures

Vehicles will enter from **Via de la Paz** and **exit onto Via de la Paz** and **exit onto Sunset** for a clear, predictable circulation pattern.



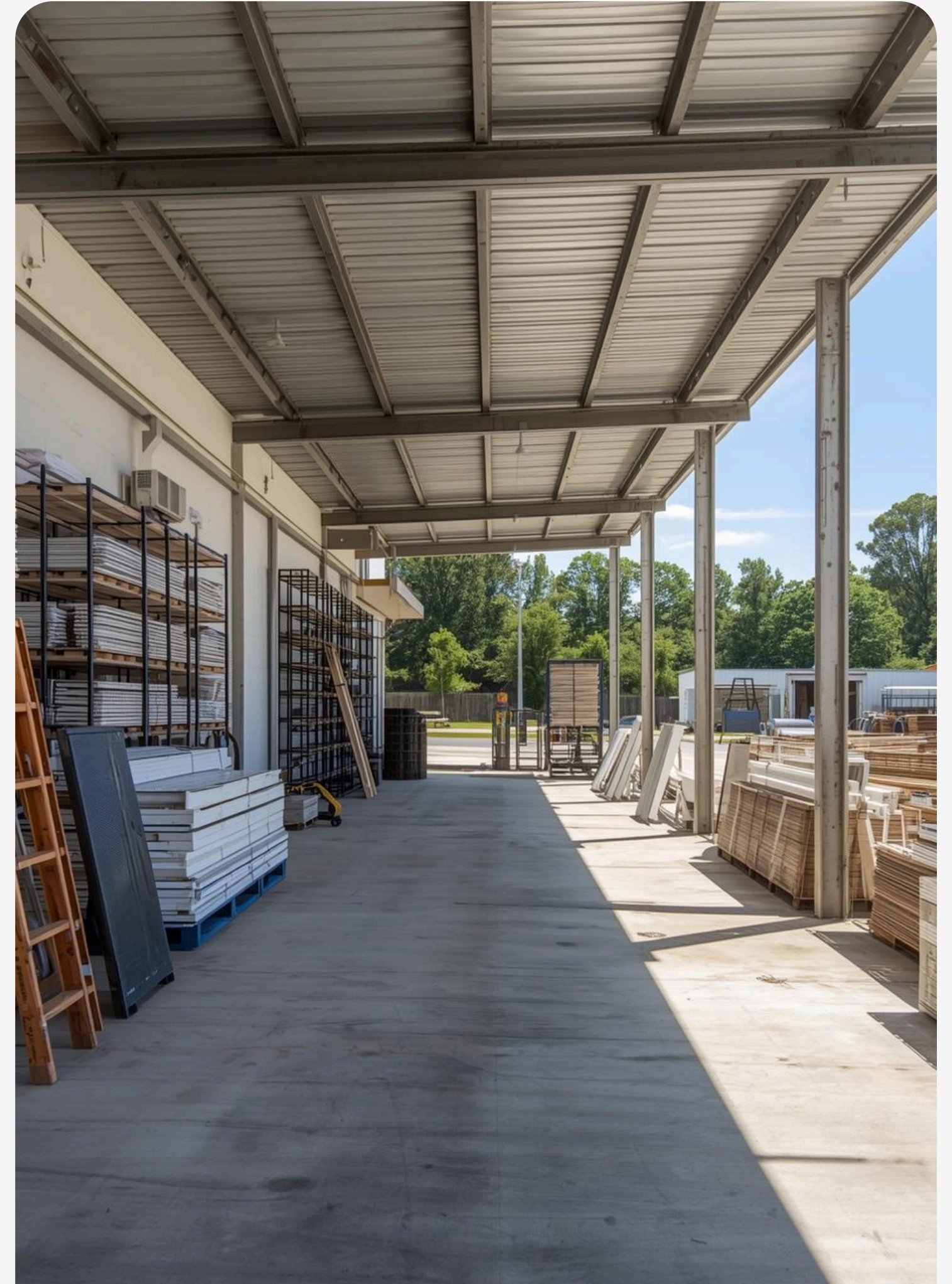
Efficient Pickup and Delivery Services

Our drive-thru flow and ready-to-deploy delivery service make pickups and jobsite **deliveries quick**, easy, and tailored to customer needs.

Operating Hours

Weekday Availability

- **Weekday-only operations:** Open Monday–Friday to limit disruption.
- **Daytime hours only:** 7:00 AM – 3:00 PM — all activity stays within regular business hours.
- **Neighborhood-first approach:** No evening operations, helping keep the area calm and predictable for nearby residents.



Materials for Rebuild

Raw Building Materials

Foundation Necessities

- Lumber & Composites
- CMU Concrete Blocks
- Rebar & Accessories
- Bulk Aggregates
- Bagged Cementitious Products
- Drainage & Waterproofing Solutions

Foundation

High-quality rebar, lumber and block for durable construction and foundational support.



Aggregates

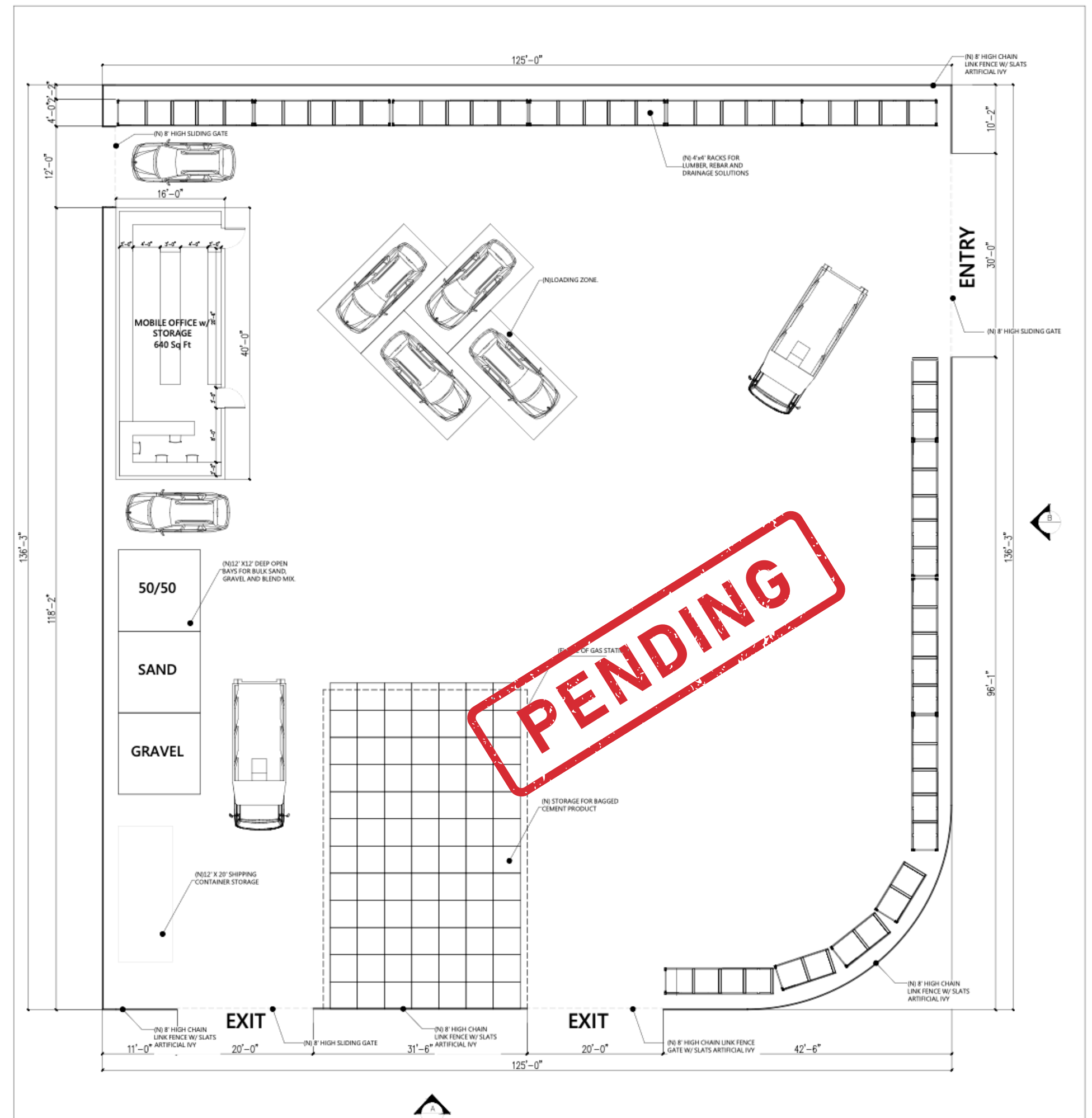
Various aggregates available for drainage and structural applications.



Entry/Exit Points

Site Layout

- **Entry and exit** points designated for customer pickups and delivery loading zones
- Detailed view of material storage areas
- Arrangement of the temporary office
- Placement of **perimeter fencing**
- Ensures **safety and efficiency** during operations



Trip Reduction

Managing Deliveries

- Our strategy for local availability and managed deliveries greatly **minimizes traffic trips within the community.**
- By overseeing loading procedures and adapting operations based on real-time conditions, we ensure there are **minimal disruptions.**
- This proactive approach not only boosts efficiency but also helps maintain a **smooth flow of vehicles** on the surrounding roads.





Ensuring Cleanliness and Order in Operations

We will maintain a clean, orderly yard with daily housekeeping—sweeping, debris removal, and organized staging—to keep **operations professional and respectful**.



Maintaining Clear Boundaries for Safety

We will install **high-quality racking** to securely store heavy materials and keep all inventory contained within designated areas for a safer, controlled site.



Fast Response to Community Concerns

We will remain **accessible and responsive**, with neighbors able to call or email anytime and receive timely acknowledgment and solutions-focused follow-through.

Temporary Structures Overview

Container Office

A clean and professional container design that offers **both storage and workspace** to facilitate operations.



Fence

This setup includes a privacy fence that is **both effective and visually appealing** for our neighbors.



Surveillance Cameras

A clean, professional security camera system designed to **monitor** the worksite, **deter** unauthorized activity, and support **safe, well-managed** operations.



Monitoring Security Overview

Lighting

A functional, temporary mobile office setup supported by **solar, motion-sensor lighting**—designed to be responsive for **safety** while remaining subtle and visually considerate for our neighbors.





Thank You

ACEBUILDING
MATERIALS.COM